



**Towards an
Equitable
Response and
Recovery**

Grantmaking
Strategy Under
COVID-19

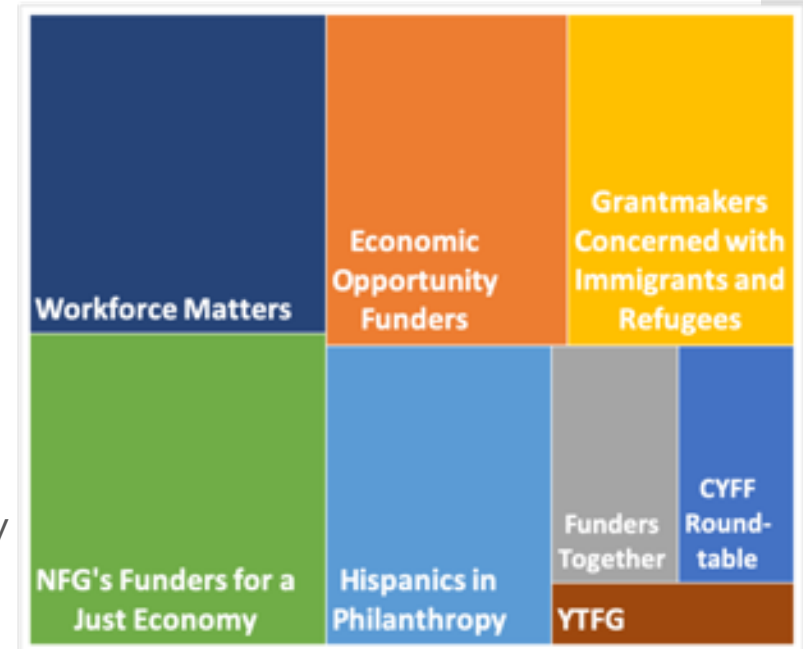


**Summary: Participant Pre-Call Survey +
Live Webinar Poll Responses**

Grantmaking Domains Represented

Which of the following groups are you or your foundation affiliated with?

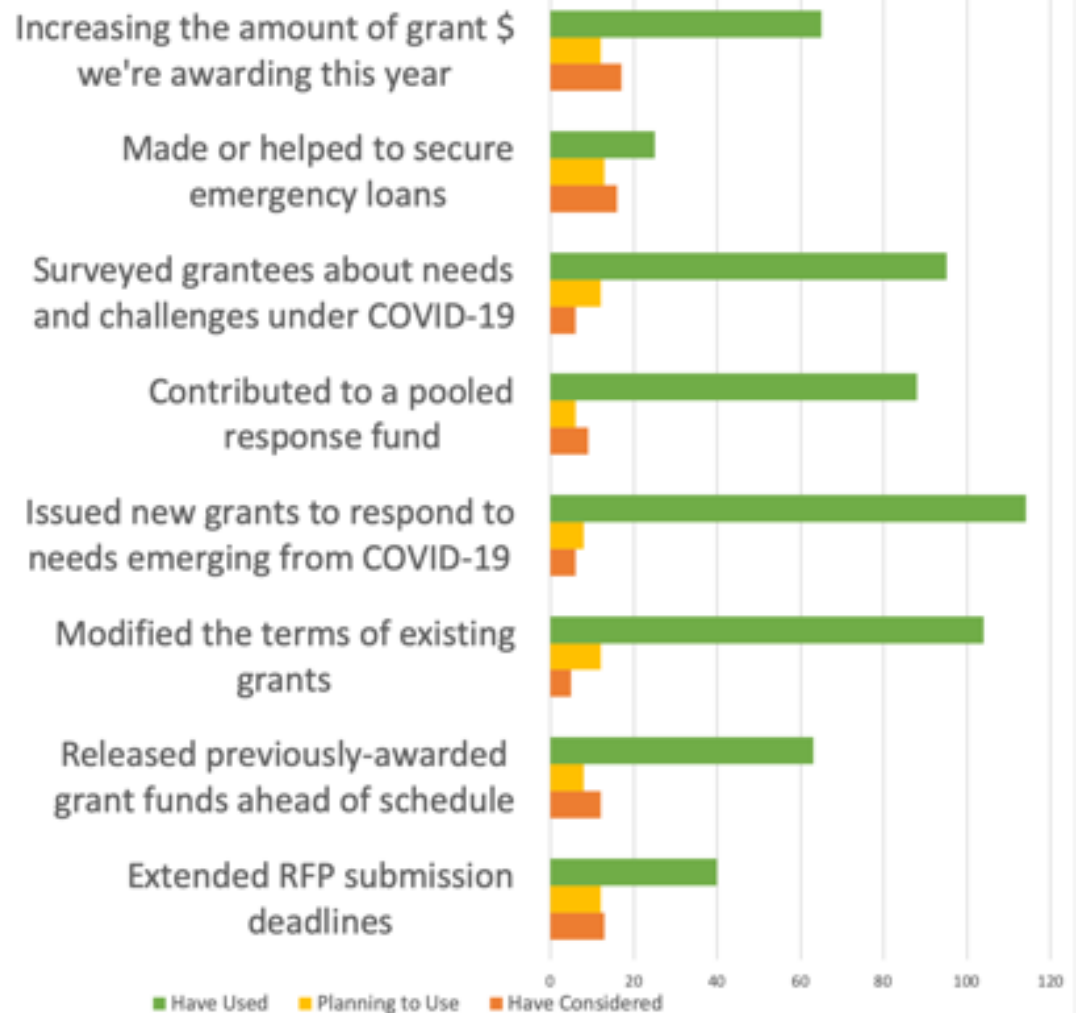
- Children, Youth, and Family Funders Roundtable 6%
- Economic Opportunity Funders 17%
- Funders Together to End Homelessness 6%
- Grantmakers Concerned with Immigrants and Refugees 16%
- Hispanics in Philanthropy 14%
- NFG's Funders for a Just Economy 19%
- Workforce Matters 20%
- Youth Transition Funders Group 3%





Pre-Call Survey

Which of the following COVID-19 response strategies have you or your organization used or considered?



What other response strategies have you used?

- Advocating for **increased payout**
- Advocating for **systems changes** necessary for our collective future success
- Briefing with philanthropic partners to discuss priorities under Covid-19 and **intersectionality to Democracy security**.
- Changing the grant **reporting** structure to reduce burden on grantees
- Committed to **supporting staffing costs** of all our grantee partners in order to prevent lay-offs.
- Identified specific types of funding most needed by partners and raised funds for additional **emergency funding pool**.
- **Eliminating reporting and application paperwork** for 2020.
- **General Operating Support** for current applicants & upcoming grants dockets; modified recently approved grants from program to general operating;
- **Granting % of all funds raised to our indigenous people's community foundation**.
- Offering **capacity building** resources on fundraising and scenario planning
- **Pivoting from our 'traditional' grantmaking** focus areas to address issues directly exacerbated/created by COVID-19
- Providing 100% **General Operating Support** grants.

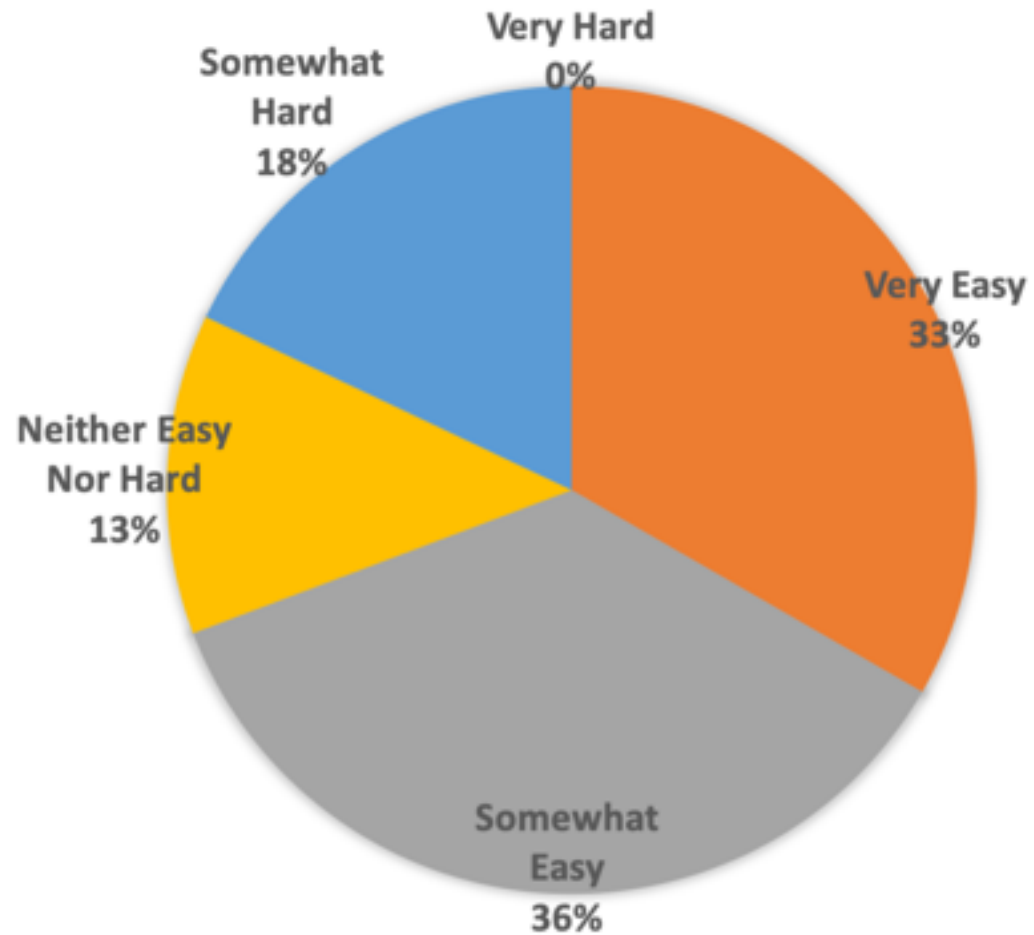
What other response strategies have you used?

- **Rapid response** to get \$\$\$ to grantees faster.
- **Reducing reporting** restrictions to barest, possible minimum, if having no-reporting was not possible.
- Significantly **increasing payout** this year
- We are part of a philanthropy cooperative that imagined and then quickly funded an **independent, comprehensive look-forward study** to be released in July. The specific equity lens for this roadmap, Committee for Greater Los Angeles, is to outline what resources -- public, private, other-- have been deployed in massive Los Angeles County as COVID response, and to ascertain if and how they have reached the most vulnerable, and then-- what needs to happen ahead, and recommend accountability for doing so on the long road to recovery. The effort gleans good work already in place and has galvanized USC, UCLA and the Advancement Project to connect data and policy recommendations. It is anchored by an amazing leader serving pro bono and has engaged a small steering committee from city, county, community and philanthropy.
- We don't require grantees to write **narrative reports** this year; Foundation staff will interview them and write them ourselves.
- **Web convenings for our grantees** to share and learn from each other & bring in experts on topics they request
- Will be conducting **community engagement** to inform recovery strategy

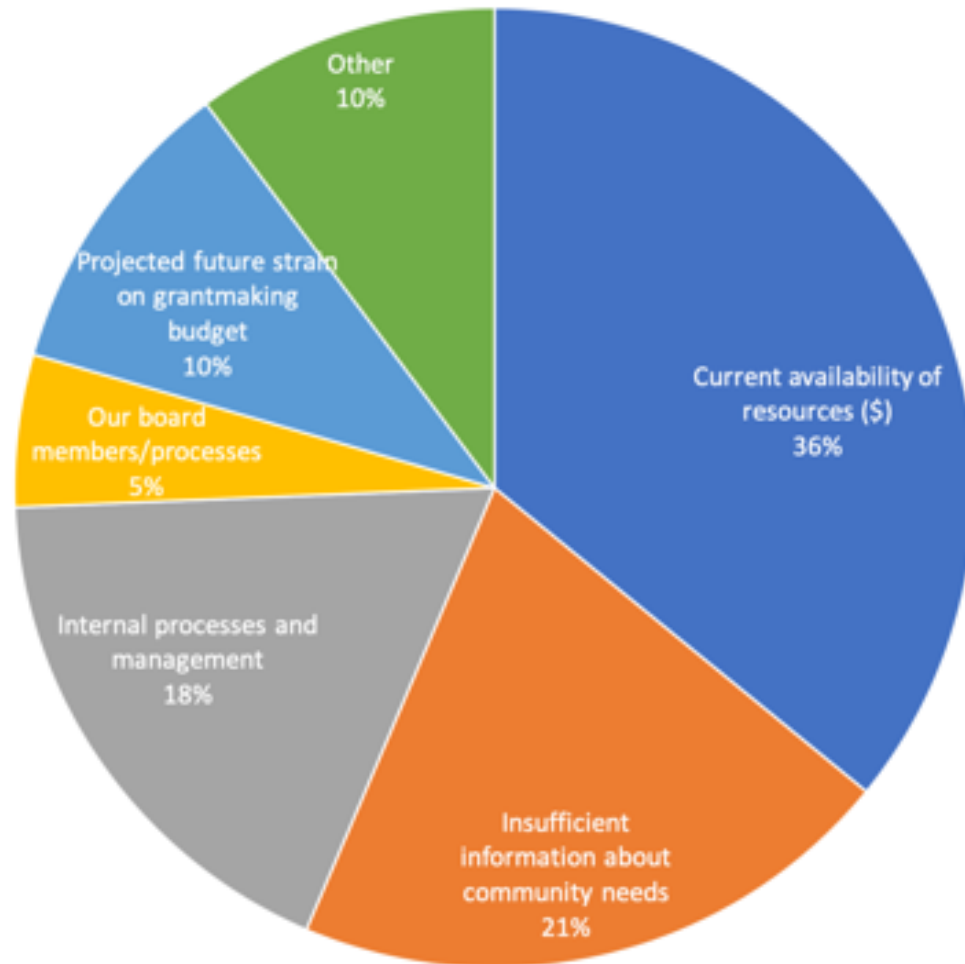


Live Webinar Poll Responses

How difficult has it been to deploy COVID-19 response funds?



What has been your foundation's single greatest challenge in deploying COVID-19 response funds to date?



Thank You to
Our
Co-Sponsors



Children, Youth & Family Funders
ROUNDTABLE



**FUNDERS FOR
A JUST ECONOMY**
NEIGHBORHOOD FUNDERS GROUP



**Economic
Opportunity
Funders**



Funders Together
TO END HOMELESSNESS



GRANTMAKERS CONCERNED WITH
IMMIGRANTS AND REFUGEES

HIP

HISPANICS
IN PHILANTHROPY
The power of giving and connecting



Youth Transition Funders Group



For More Information

workforce-matters.org
info@workforce-matters.org

